



Pennsylvania
Department of Education

Getting Strategic with PA MASLOW Resources

College Success Forum

February 4, 2025



Agenda

- Introductions
- PA MASLOW: Hierarchy of Collegiate Basic Needs
- Small Group Strategic Planning and Discussion
- PDE Resources



Maslow's Hierarchy of Needs A Student-Centered Perspective





PA MASLOW





Collegiate Basic Needs Strategic Planning

- Strategic Planning Exercise: Choose from the checklist an item that your institution does not have in place.
- Discussion: Strategic planning process using the following questions (recommend choosing 1-2 for an in-depth discussion):
 - What are your institution's unique strengths and challenges?
 - What is your campus culture, its way of doing things (i.e., hierarchal, relationship-focused, etc.)?
 - What is your current capacity? What is doable now, midterm, long term? Who needs to be at the table?
 - What are the steps toward your goal?
 - What external resources can you tap (people, supplies, funding, etc.)?



PA MASLOW



Group Report Out:

- What common theme(s) did you discover in your discussion?
- What key idea(s) will you take back to your institution?



PDE Resources

- 2024 Governor's Budget: Postsecondary and Higher Education
- Postsecondary and Higher Education: PHEAA
- PA FAFSA GO!
- PA MASLOW Break Down Silos
- Asset Mapping
- Collegiate Basic Needs Dialogue Roundtable



2024 Governor's Budget: Postsecondary/Higher Education

Funding: Nearly \$60 million to increase access and completion

- Provides critical increases to our community colleges and PASSHE schools, including a **\$15.7 million increase** – or a 6 percent increase – for community colleges and a **\$35.1 million** increase for PASSHE schools – also a 6 percent increase.
- Dual Credit Innovation Grant Program = \$14 million (NEW)
- Parent Pathways Learning Network = \$1.6 million
- Adult Education and Family Literacy = \$16.3 million
- It's On Us PA Grant = \$1.5 million
- Hunger-Free Campus Initiative = \$1 million



Postsecondary/Higher Education

An additional \$143 million to PHEAA to make college more affordable for PA students, including:

- \$54 million increase for student grants
- \$5 million increase for disadvantaged students' scholarships
- \$36 million increase for the Ready to Succeed Scholarship and expanded criteria to increase the number of eligible students
- \$25 million for the Grow PA Scholarship Program **(NEW)**



PA FAFSA GO!

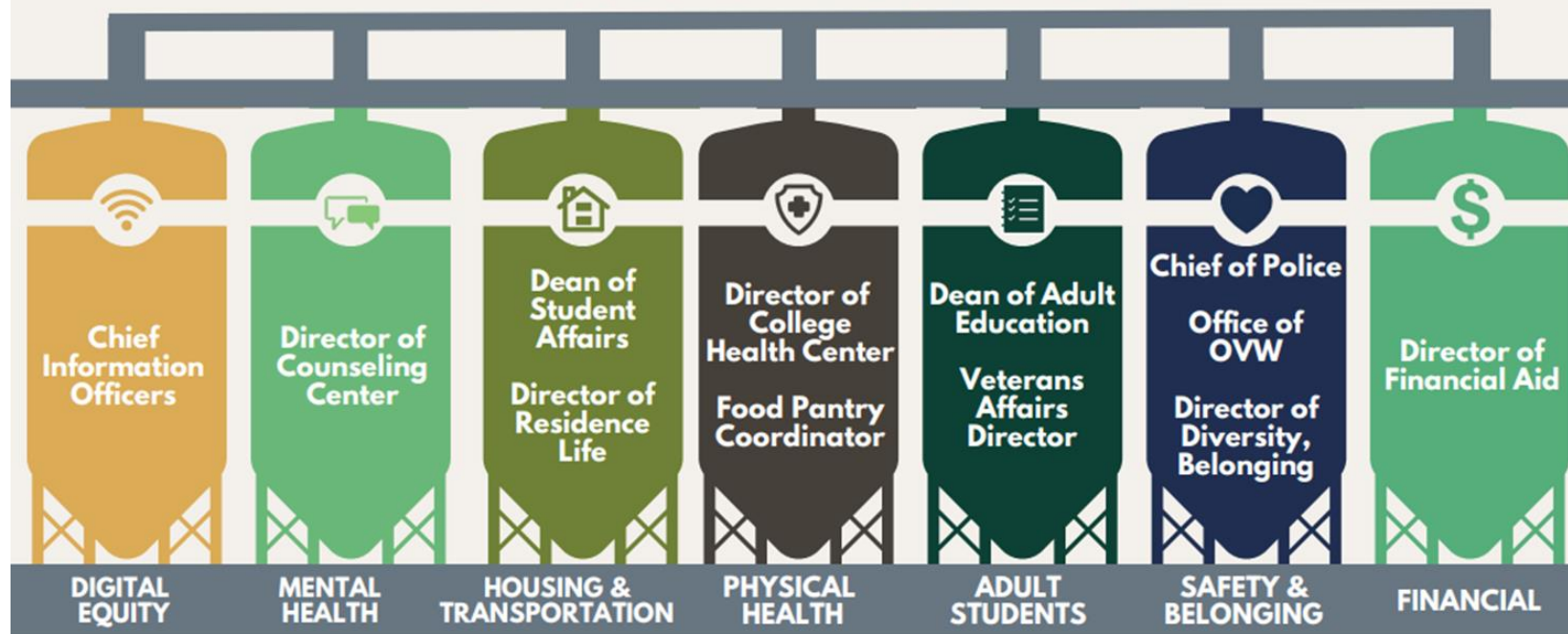
- A collaboration between PDE, PHEAA, PASFAA, PACAC, AND PSCA
- The FAFSA for 2025-26 is now open for all students! We'll be updating the [PA FAFSA Go!](#) page in the coming days.
- In the meantime, you can direct learners to [FAFSA® Application | Federal Student Aid](#) to start/complete their application. And don't forget, it's not too later for anyone to complete the 2024-25 FAFSA which is also still available.
- We are excited for our students! Let's make sure they don't leave any free money on the table.





PA MASLOW

Break Down Silos Who needs to be at the table?



Conversations should also include the President, Provost, VP of Teaching Excellence, Director of Advising, Director of Student Success, Head of the Library, Director of Accessibility, Director of Food Services, and Student Government Leaders.



Asset Mapping

PA MASLOW Checklist

Scoring: 0 points for no or don't know; 5 points for in-progress; 10 points for yes

Does your campus have the PA Hunger-Free Campus Designation? _____

Do you have a food pantry on campus? _____

Is your campus a JED Campus? _____

Does your campus have a mental health app available for all students? _____

Does your campus submit its suicide prevention plan to PDE's Office of Postsecondary and Higher Education as part of Act 110 of 2018? _____

Have you ever received an It's On Us PA grant? _____

Does your campus have an office for veterans' support? _____

Do you provide free on-campus housing to students on holidays, semester breaks, or during the summer? _____

Do you provide parenting and adult student services on campus? _____

Does your campus provide financial wellness education to students in addition to financial aid (either through a separate office or class)? _____

If you scored **100 points**, your campus is doing amazing work across the seven pillars of PA MASLOW. Congratulations on supporting Pennsylvania learners and helping them accomplish amazing things. We'd love to hear about some of your best practices to share with others.

If you scored between **70-90 points**, you're doing fantastic work to support your learners across the seven pillars of PA MASLOW. Look at the things you could improve and create an action plan. Let us know what you have in mind and how we can support you!

If you scored between **40-60 points**, you are off to a great start accomplishing the seven pillars of PA MASLOW. Look at the areas where you could do more, create an action plan, and gain additional support from your campus community. You can't do this alone, and we're here to help!

If you scored between **10-30 points**, you have begun the work of providing collegiate basic needs under the seven pillars of PA MASLOW. We look forward to seeing where you'll go and what you'll do next. Reach out to another institution that is further along in the work and collaborate on best practices. Let us know if we can help you connect to others!

If you scored **0 points**, it's time to get started on collegiate basic needs work for your students. By focusing on the seven pillars of PA MASLOW, you'll ensure your students are getting everything they need, that they have a sense of agency and belonging, and that they're on the path to health and prosperity.

- Do you know what resources your campus has available for students/parenting learners?
- How do you identify students who need support?
- How do you train staff on what's available and re-train based on turnover and new resources?



Additional Resources

YOU GOOD?

Asking for help is something we all do.
Get connected with financial aid resources:

Supported by: PA MASLOW

This poster features a background image of a person's hands holding a smartphone displaying a banking app with transaction history and a credit card. The text is overlaid in white and green.

YOU GOOD?

Asking for help is something we all do.
Get connected with food/hunger resources

Supported by: PA MASLOW

This poster features a background image of several jars of Fisher brand creamy peanut butter on a shelf. The text is overlaid in white and green.

YOU GOOD?

Asking for help is something we all do.
Get connected with housing resources

Supported by: PA MASLOW

This poster features a background image of a bed with a colorful patterned blanket and a lamp. The text is overlaid in white and green.



PA Collegiate Basic Needs Dialogue Roundtable



Collegiate Basic Needs Roundtable



Contact/Mission

For more information on PA MASLOW please visit PDE's website at www.education.pa.gov or contact:

Lisa Balsamo: abalsamo@pa.gov

Ali Caccavella: acaccavell@pa.gov

David Stewart: dalstewar@pa.gov

The mission of the Department of Education is to ensure that every learner has access to a world-class education system that academically prepares children and adults to succeed as productive citizens. Further, the Department seeks to establish a culture that is committed to improving opportunities throughout the commonwealth by ensuring that technical support, resources, and optimal learning environments are available for all students, whether children or adults.