



Cost of Attendance

Presenters

Melissa Ibanez
Juli Louttit

We Are All Super Heroes

2019 PASFAA Spring Training

Cost of Attendance (COA)

- Student Budgets
- 1st component of the formula for determining financial aid eligibility

$$\text{COA} - \text{EFC} = \text{Need}$$



We Are All Super Heroes
2019 PASFAA Spring Training

Cost of Attendance Components

- Tuition
- Fees
- Room and Board
- Transportation
- Personal
- Books and Supplies

Costs should be reviewed annually



Cost of Attendance/Student Budgets Development

Purposes

- Realistic
- Accurate Projection
- Equitable

Principles

- Comprehensiveness
- Reasonableness
- Systematic Development
- Documentation



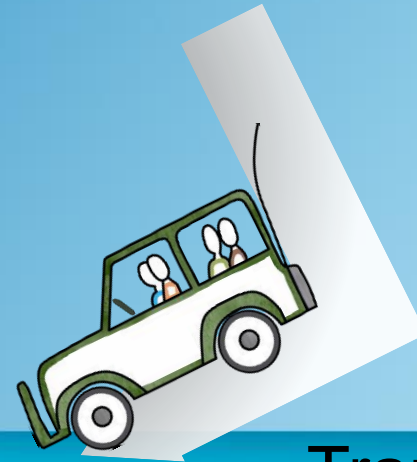
Setting Costs



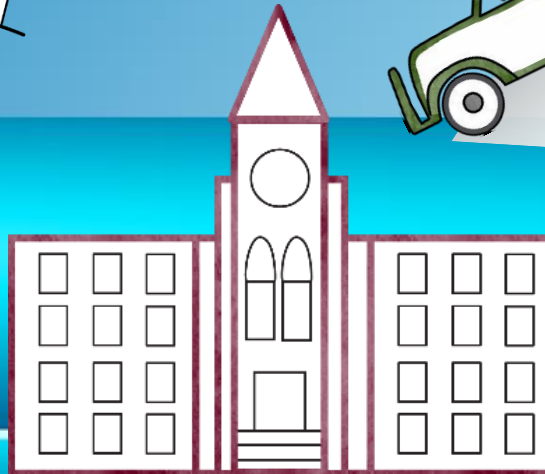
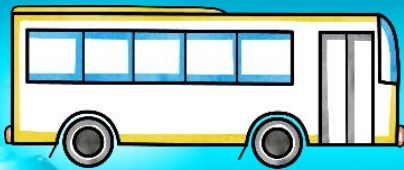
Cost of Living



Housing Options



Transportation Options / Distance



Additional Costs/PJ documented

- Computers/laptops
- Daycare costs
- Study abroad
- Disability expenses
- Clinical/practicums



Proper documentation required

COA for Groups/Categories of Students

- Freshman
 - Dormitory/off campus/commuter
 - Different majors/Different costs
 - Part time enrollment
 - In County/Out of County/Out of Stat
- ✓ Must be on College websites and Award notifications



Professional Judgment with COA

- Higher credit load
- Work Experience/Clinical – additional transportation, meals
- Professional Credentials (one time cost for licensing or application)



Impossible to individualize COA's

Cost of Attendance Required Adjustments

- **Incarcerated Students**
 - Tuition/fees and books/supplies if required
- **Correspondence Study**
 - Actual contractual tuition/fees
 - Actual contractual costs books/supplies
 - Transportation/Room and Board costs incurred during period of training



COA Adjustments

- Less than half-time students
 - Tuition and Fees
 - Books, Supplies and Transportation
 - Dependent Care Expenses
 - Room and Board (optional)
 - for not more than 3 terms or equivalent of not more than 2 consecutive terms



On Line Enrollment

- General rule no distinction made due to mode of instruction
- Professional judgment can be made if you find there is a substantial reduction in cost



Summer Budgets/COA

- Average Costs
- 2 – 4 months Cost
- Actual summer tuition
- Allowance for other components
 - Books/supplies
 - Personal
 - Transportation
 - Room/Board



Costs Waived or Paid by Other Sources

- When a specific component of a student's cost of attendance is waived or paid by another source, special treatment may be necessary

Example: Tuition Waived for Employees

- Remove tuition from COA
- Use tuition waiver amount as a resource



COA Perspectives

- Helping make college affordable
 - Larger financial aid package
 - Available resources to meet COA
 - Student Loan Debt
 - Default Management



Butler County Community College COA Examples

Butler County Residents

All Other Counties

	Commuter	On/Off Campus		Commuter	On/Off Campus
Tuition	\$3,420	\$3,420	Tuition	\$6,690	\$6,690
Room & Board	\$1,500	\$3,600	Room & Board	\$1,500	\$3,600
Books & Supplies	\$1,400	\$1,400	Books & Supplies	\$1,400	\$1,400
Transportation	\$900	\$900	Transportation	\$900	\$900
Personal	\$600	\$600	Personal	\$600	\$600
Fees	\$1,530	\$1,530	Fees	\$1,530	\$1,530
Totals	\$9,350	\$11,450	Totals	\$12,620	\$14,720



University of Pitt/Bradford Campus COA Examples

In State Residents

Out of State Residents

	Commuter	On/Off Campus		Commuter	On/Off Campus
Tuition	\$13,200	\$13,200	Tuition	\$24,668	\$24,668
Room & Board	\$5,008	\$10,222	Room & Board	\$5,008	\$10,222
Books & Supplies	\$1,000	\$1,000	Books & Supplies	\$1,000	\$1,000
Transportation	\$2,308	\$2,308	Transportation	\$2,308	\$2,308
Personal	\$1,640	\$1,640	Personal	\$1,640	\$1,640
Fees	\$942	\$942	Fees	\$942	\$942
Totals	\$24,098	\$29,312	Totals	\$35,566	\$40,780



THANK YOU !

We Are All Super Heroes
2019 PASFAA Spring Training